

# PRODUCT INFORMATION PACKET

**marathon**<sup>®</sup>  
Motors

Model No: 184TTWW4001

Catalog No: N1615

Other Purpose Motor, 5 HP, 3 Ph, 60 Hz, 208-230/460 V, 3600 RPM, 184TC Frame, TEFC

Regal and Marathon are trademarks of Regal Rexnord Corporation or one of its affiliated companies.  
©2025 Regal Rexnord Corporation, All Rights Reserved. MC017097E

**RegalRexnord**

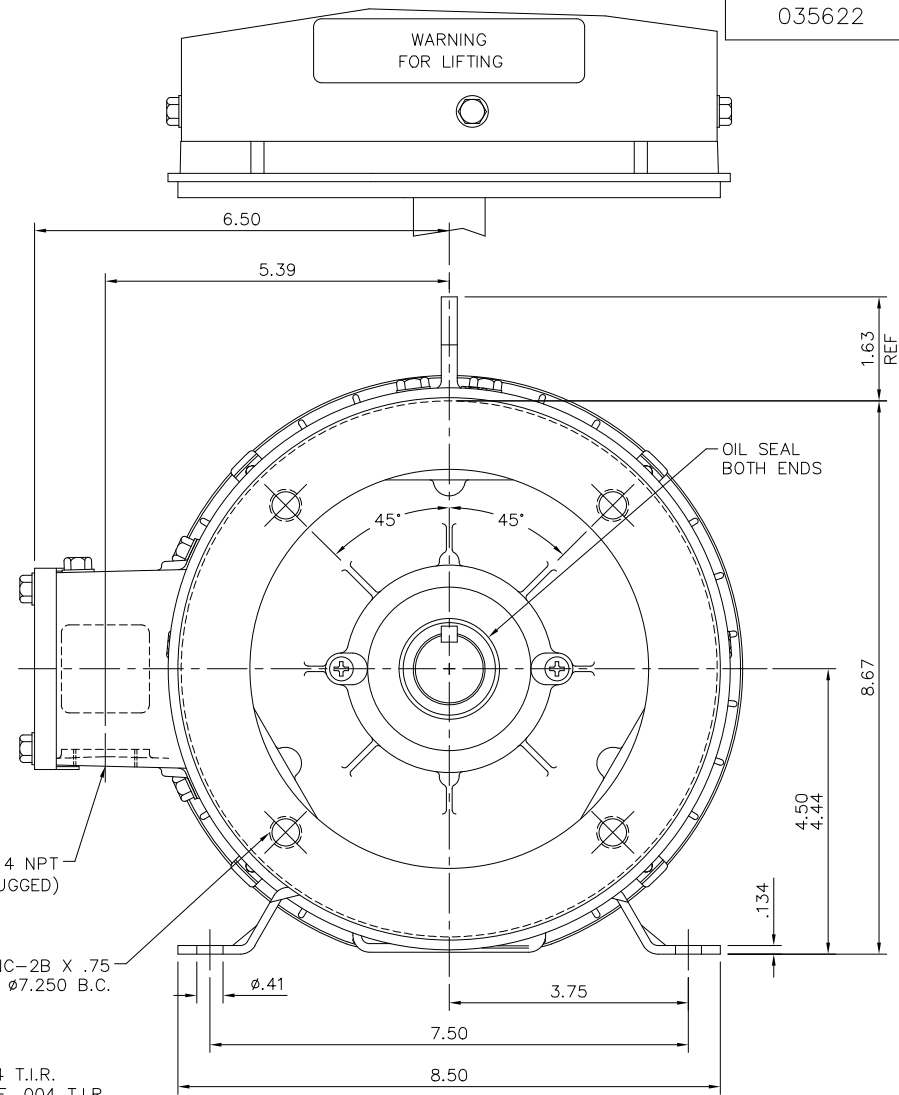
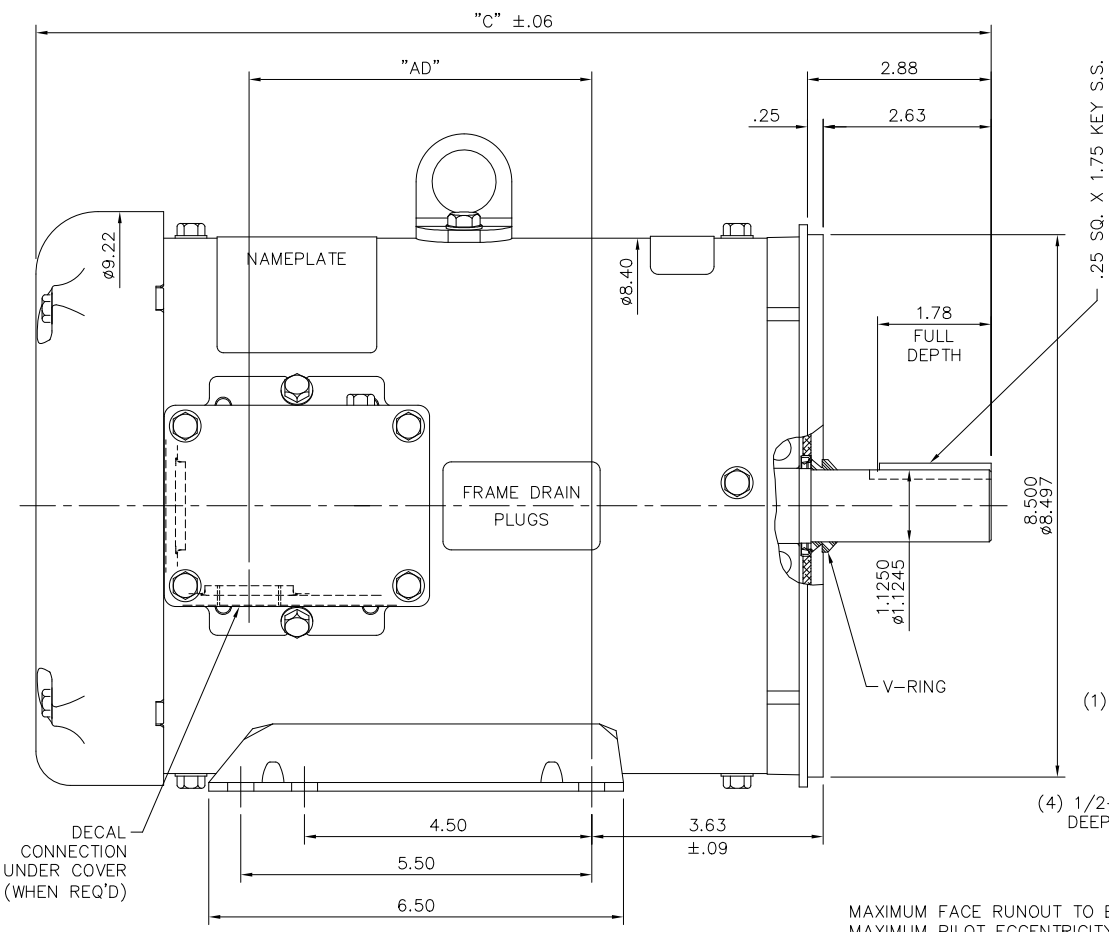
### Nameplate Specifications

Phase	<b>3</b>	Output HP	<b>5 Hp</b>
Output KW	<b>3.7 kW</b>	Voltage	<b>208-230/460 V</b>
Speed	<b>3485 rpm</b>	Service Factor	<b>1.15</b>
Frame	<b>184TC</b>	Enclosure	<b>Totally Enclosed Fan Cooled</b>
Thermal Protection	<b>No Protection</b>	Efficiency	<b>87.5 %</b>
Ambient Temperature	<b>40 °C</b>	Frequency	<b>60 Hz</b>
Current	<b>13.4-12.2/6.1 A</b>	Power Factor	<b>87</b>
Duty	<b>Continuous</b>	Insulation Class	<b>F</b>
Design Code	<b>B</b>	KVA Code	<b>J</b>
Drive End Bearing Size	<b>6207</b>	Opp Drive End Bearing Size	<b>6205</b>
UL	<b>Recognized</b>	CSA	<b>Y</b>
CE	<b>Y</b>	IP Code	<b>55</b>
Number of Speeds	<b>1</b>		

### Technical Specifications

Electrical Type	<b>Squirrel Cage Induction Run</b>	Starting Method	<b>Across The Line</b>
Poles	<b>2</b>	Rotation	<b>Reversible</b>
Resistance Main	<b>0 Ohms</b>	Mounting	<b>Rigid Base</b>
Motor Orientation	<b>Horizontal</b>	Drive End Bearing	<b>Ball</b>
Opp Drive End Bearing	<b>Ball</b>	Frame Material	<b>Rolled Steel</b>
Shaft Type	<b>T</b>	Overall Length	<b>14.47 in</b>
Frame Length	<b>9.00 in</b>	Shaft Diameter	<b>1.125 in</b>
Shaft Extension	<b>2.75 in</b>	Assembly/Box Mounting	<b>F1 ONLY</b>
Outline Drawing	<b>035622-900</b>	Connection Drawing	<b>005010.01ME</b>

035622



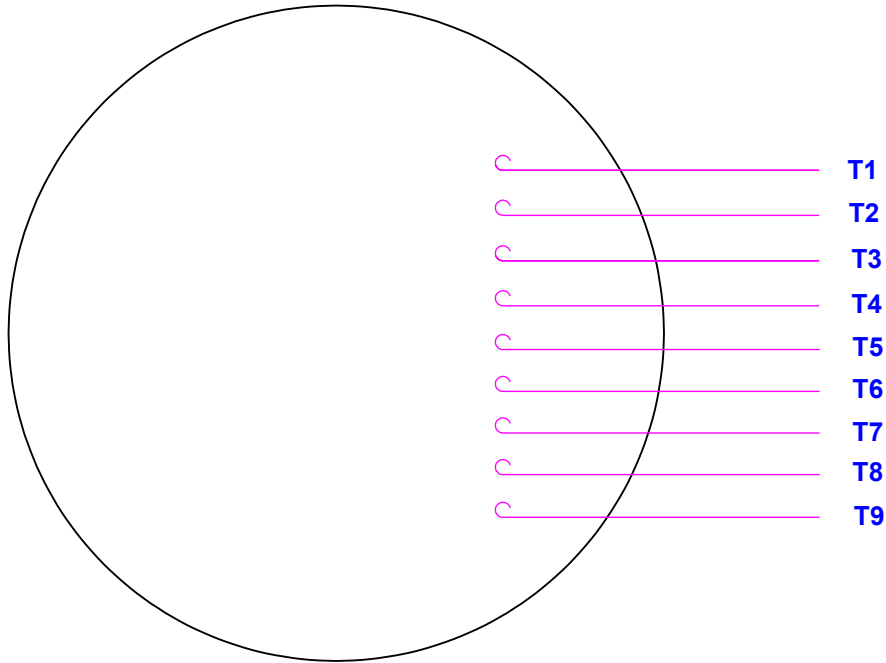
MAXIMUM FACE RUNOUT TO BE .004 T.I.R.  
 MAXIMUM PILOT ECCENTRICITY TO BE .004 T.I.R.  
 PERMISSIBLE SHAFT RUNOUT TO BE .002 T.I.R.

- SPECIAL FEATURES:**
- 1) SHAFT SEALS & V-RING
  - 2) DRAIN HOLES IN FRAME & CONDUIT BOX
  - 3) STAINLESS STEEL SHAFT, HARDWARE & NAMEPLATE
  - 4) GASKETS THROUGHOUT

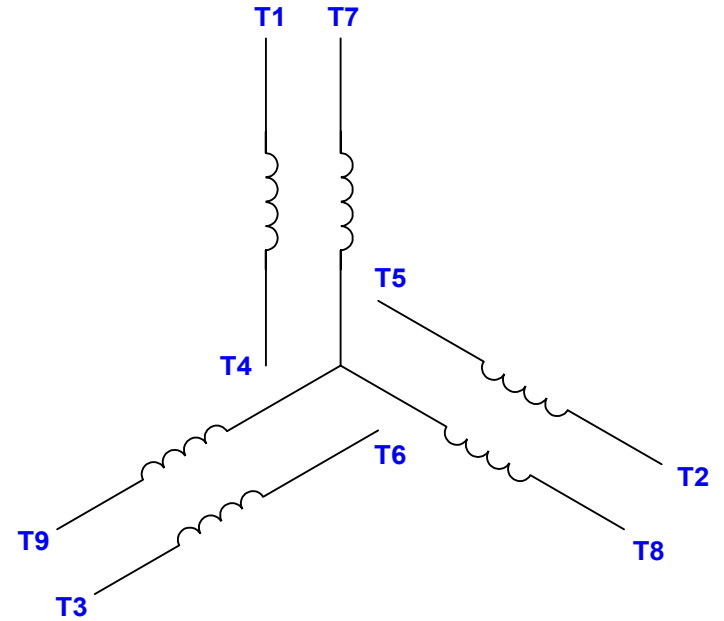
DASH NO.	"C"	"AD"
850	13.97	4.37
900	14.47	4.87
950	14.97	5.37
1000	15.47	5.87
1050	15.97	6.37
1100	16.47	6.87
1150	16.97	7.37

		TOLERANCES UNLESS SPECIFIED		MARATHON ELECTRIC		DRAWN YS 01/29/08	
		DEC.	INCHES			CHK	
		.X	±.1			APPD	
G	WARNING DECAL REMOVED NMR-0235355	DKB1/18/2024	.XX	±.03	TITLE	OUTLINE - 180TC FRAME	
F	ITEM #850 ADDED IN TABLE	PVR 02/20/14	GR	.XXX	±.005	TEFC - RIGID "C"	
E	WARNING DECAL ADDED PER ECO-0045263	UD 02/10/14	GR	.XXXX	±.0005	MAT'L	SCALE 1=2
NO.	REVISION	BY & DATE	CHK	ANG	±1/2"	FINISH	REF
			RFP			CAD FILE	035622
			DIST			SIZE	DRAWING NO.
						B	035622
							REV. F

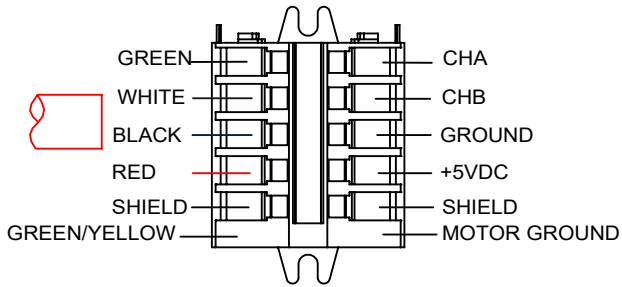
VIEW FROM OUTSIDE OF MOTOR AT SWITCH END.



LINE LEADS



ENCODER WIRING



RBC PROPRIETARY AND CONFIDENTIAL INFORMATION  
 This document is the property of REGAL BELOIT CORPORATION ("RBC") including its subsidiaries and divisions and contains proprietary information of RBC. This document is loaned on the express condition that neither it nor the information contained therein shall be disclosed to others without the express written consent of RBC, and that the information shall be used by the recipient only as approved expressly by RBC. This document shall be returned to RBC upon its request. This document may be subject to certain restrictions under U.S. export control laws and regulations.

VOLTAGE	L1	L2	L3	JOIN & INSULATE
HIGH	T1	T2	T3	(T4, T7) (T5, T8) (T6, T9)
LOW	T1, T7	T2, T8	T3, T9	T4, T5, T6

				TOLERANCES UNLESS SPECIFIED		DRAWN RDW 04/12/02	
				DEC	INCHES	CHK	
				.X	±.1	APPR	
2	CHG FROM MARATHON TO RRX TEMPLATE AS PER ECR-0237142	KVDG 09/19/24	DS	.XX	±.01	SCALE 1:1	
1	ADDED ENCODER WIRING	UD 7/13/2012	PI	.XXX	±.005	REF FIG. 2-51	
--	REDRAWN IN SOLIDWORKS	VJB 02/08/11		.XXX	±.0005	FMF	
NO	REVISION	BY & DATE	CHK	ANG	±1/2°	PAGE OF	
THIRD ANGLE PROJECTION			RFP	PREV		SIZE	DRAWING NO
			NETWORK FILE NAME		00501001ME	A	005010-01ME
							REV 2

**Regal Rexnord** Regal Beloit America, Inc.

TITLE EXTERNAL WIRING DIAGRAM  
 3 PHASE W/O PROTECTOR

MAT'L DECAL - 004014